

GUIDE PRICE

£600,000

Ecclesbourne Gardens

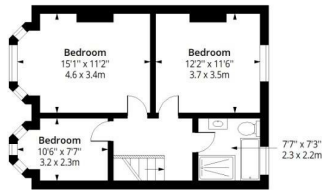
London, N13 5JD



EPC RATING: D    COUNCIL TAX BAND: E

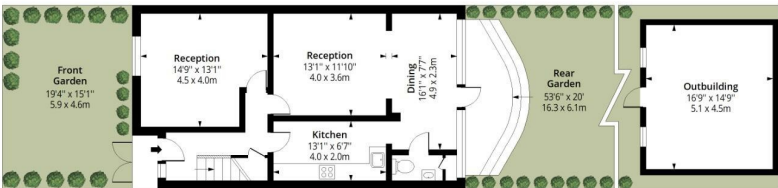
Ecclesbourne Gardens N13

Approx. Gross Internal Area 1217 Sq Ft - 113.06 Sq M  
Approx. Gross Outbuilding Area 247 Sq Ft - 22.95 Sq M



First Floor

Floor Area 524 Sq Ft - 48.68 Sq M

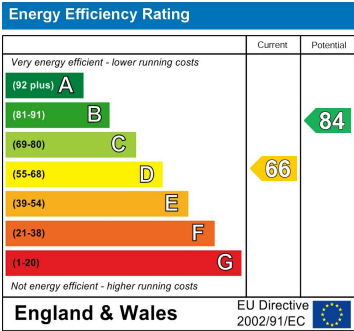


Ground Floor

Floor Area 693 Sq Ft - 64.38 Sq M



Measured according to RICS IPMS2. Floor plan is for illustrative purposes only and is not to scale. Every attempt has been made to ensure the accuracy of the floor plan shown, however all measurements, fixtures, fittings and data shown are an approximate interpretation for illustrative purposes only. 1 sq m = 10.76 sq ft  
lpaplus.com Date: 17/2/2026



Agents Note: Whilst every care has been taken to prepare these particulars, they are for guidance purposes only. All measurements are approximate and are for general guidance purposes only and whilst every care has been taken to ensure their accuracy, they should not be relied upon and potential buyers/tenants are advised to recheck the measurements.

Christopher Mark  
ESTATE AGENTS

OFFICE ADDRESS

25 Heddon Court Parade  
London  
EN4 0DB

OFFICE DETAILS

02033 690989  
Hello@christophermark.co.uk